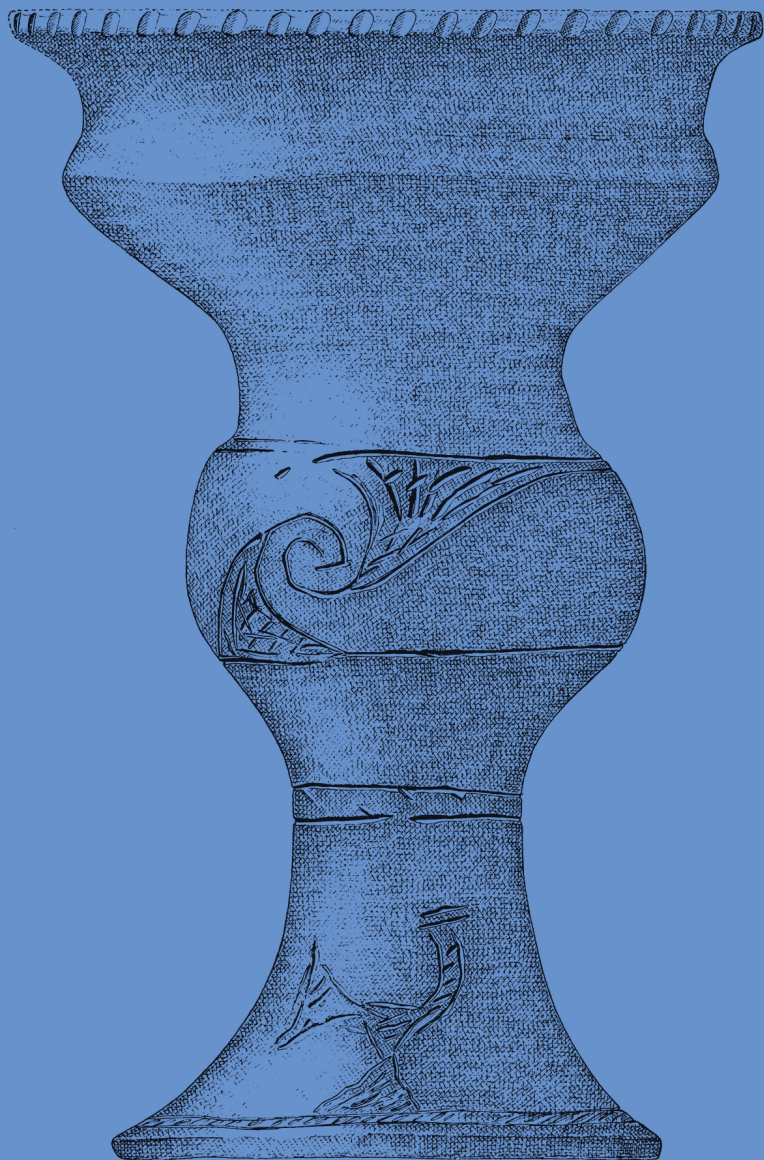




**Prehistoric
Communities
along the
Danube**



Different parts of historic Middle Danube region represented a culturally and historically integral unit for several millennia. In contrast, modern borders divide them into different worlds by cutting traditional ties. Even archaeology has not remained untouched by these tendencies.

In the last decades, large-scale rescue excavations accompanied by new technologies applied during fieldworks and assessments, provided new opportunities for both the Hungarian, Croatian and Serbian archaeological research. The international event aims to offer a platform to discuss separately achieved results within the frames of a round-table conference. It focuses on interpreting the archaeological record and the exchange of experiences of various scientific methods. The final purpose is to create a regional synthesis on a cross-border level.

Venue:

**Archaeological Museum Osijek, Croatia
November, 28—30 November 2019**

ORGANIZERS:

TOMISLAV HRŠAK — ARCHAEOLOGICAL MUSEUM OSIJEK
MARKO DIZDAR — INSTITUTE OF ARCHAEOLOGY ZAGREB

SCIENTIFIC BOARD:

MARKO DIZDAR — INSTITUTE OF ARCHAEOLOGY ZAGREB
TOMISLAV HRAŠK — ARCHAEOLOGICAL MUSEUM OSIJEK
TIHOMILA TEŽAK-GREGL — DEPARTMENT OF ARCHAEOLOGY, FACULTY
OF HUMANITIES AND SOCIAL SCIENCES UNIVERSITY OF ZAGREB
JACQUELINE BALEN — ARCHAEOLOGICAL MUSEUM ZAGREB
VIKTÓRIA KISS — INSTITUTE OF ARCHAEOLOGY, RESEARCH CENTRE
FOR THE HUMANITIES HUNGARIAN ACADEMY OF SCIENCES BUDAPEST
ALEKSANDAR KAPURAN — INSTITUTE OF ARCHAEOLOGY BELGRADE
DARIA LOŽNJAK DIZDAR — INSTITUTE OF ARCHAEOLOGY
CAROLA METZNER-NEBELSICK — LUDWIG-MAXIMILIAN UNIVERSITY
MÜNCHEN
HRVOJE POTREBICA — DEPARTMENT OF ARCHAEOLOGY, FACULTY
OF HUMANITIES AND SOCIAL SCIENCES UNIVERSITY OF ZAGREB

GRAPHIC DESIGN:

NINA BAČUN & ROBERTA BRATOVIĆ (OAZA)

PRINTED BY:

ISPIS D.O.O.

PUBLISHER:

INSTITUTE OF ARCHAEOLOGY & ARCHAEOLOGICAL MUSEUM OSIJEK

FINANCIAL SUPPORT:

MINISTRY OF SCIENCE AND EDUCATION OF THE REPUBLIC OF CROATIA
HR — 10000 ZAGREB, DONJE SVETICE 38
MINISTRY OF CULTURE OF THE REPUBLIC OF CROATIA
HR — 10000 ZAGREB, RUNJANINOVA 2

ZAGREB — OSIJEK 2019

OSIJEK, 28th — 30th November, 2019

CONFERENCE PROGRAM

28th November 2019

9.00 Arrival and registration

10.00 Opening the conference (T. Hršak and M. Dizdar)

KEYNOTE LECTURE

10.10 Mitja Guštin, **Up the river Danube to the core of Europe and vice versa**

10.40 Coffee break

NEOLITHIC

chairman: Rajna Šošić Klindžić

11.00 Jelena Jovanović — Jelena Marković — Camille de Becdelievre — Alejandro Romero — Sofija Stefanović: **Diet-related strategies of Early Neolithic communities along the Danube and its vicinity: from the Danube Gorges through southern part of Great Pannonian Plain**

11.20 Krisztián Oross: **Absolute chronology of 6th millennium calBC western Hungary: achievements and opportunities**

11.40 Kristina Penezić: **Danube Neolithic landscapes**

12.00 Dragana Antonović — Dragana Rajković: **Starčevo culture luxury: cult objects and personal ornaments made of stone**

12.20 Discussion

12.40 Coffee break

chairman: Krisztián Oross

13.00 Lidija Balj: **Archaeological traces of the childhood in the Vinča culture from Gomolava site**

13.20 Marcel Burić — Roman Scholz: **Noli tangere circulos eorum: non-destructive magnetometric and geological investigations on the Bapska tell settlement**

- 13.40 Katarina Botić: **Neighbours with benefits? Vinča's presence along the Danube's right bank in eastern Slavonia and its coexistence with the other Neolithic populations**
- 14.00 János Jakucs: **Vinča, Ražište, Malo Koreno, Sopot: Comments on Chronology and Cultural Dynamics from a Southeast Transdanubian Perspective**
- 14.20 Discussion
- 14.40 Lunch in Museum
chairman: Katarina Botić
- 15.30 Maja Krznarić Škrivanko — Boris Kratofil: **Vinkovci — Zablacé: Newly discovered site of the Sopot culture in Vinkovci Region**
- 15.50 Boban Tripković — Rajna Šošić Klindžić — Hrvoje Kalafatić — Bartul Šiljeg — Tomislav Hršak — Ina Miloglav — Jasna Vuković: **Circles in the rye, mounds in the wood: an archaeological story of the enclosed sites in the Northern Balkans**
- 16.10 Tibor Marton — Anett Osztás — János Gábor Ódor — Krisztián Oross: **On the fringes of the Balkan Neolithic: spread of the Sopot culture along the Danube**
- 16.30 Goran Tomac: **Animal husbandry at the Sopot site Gorjani — Kremenjača (Slavonia, Croatia)**
- 16.50 Discussion
- 17.10 Coffee break
chairman: Jacqueline Balen
- 17.30 Evelin Pap: **New observations on the neolithic along the left bank of the Danube: Sopot culture burial ground at Dávod**
- 17.50 Dragana Rajković — Tomislav Hršak — Selena Vitezović: **Systematic archaeological research at the site of Kotlina, Baranya — preliminary report**
- 18.10 Szilvia Fábíán — Szilvia Guba — Nicklas Larsson — B. Roderick Salisbury — Péter Tóth — Szabolcs Czifra: **Living on the edge: landscape and settlement structures along the Danube tributaries**

18.30 Discussion

- 18.45 Coffee break
COPPER AGE
chairman: Gabriella Kulcsár

- 19.00 Anđelka Putica: **Contribution to the study of the widespread of the Retz-Gajary culture**
- 19.20 Jacqueline Balen — Ina Miloglav: **Transition and coexistence of the cultures at the end of the Copper Age in Eastern Croatia**
- 19.40 Siniša Radović — Hrvoje Kalafatić: **Cattle-breeding in Slavonia during Copper Age: case study of Čeminac — Vakanjac**
- 20.00 Selena Vitezović — Vedrana Krištofić: **Bone industry in the Vučedol culture: some preliminary results**
- 20.20 Discussion
- 20.40 Final discussion — Neolithic and Copper Age (T. Težak-Gregl)
- 21.00 Dinner in Museum

29th November 2019

- BRONZE AGE
chairman: Hrvoje Kalafatić
- 9.00 Gabriella Kulcsár: **Bronze Age Settlement and Society along the Danube in Central Hungary**
- 9.20 Viktória Kiss — Andás Czene — Marietta Csányi — János Dani — Anna Endrődi — Szilvia Fábíán — Tamás Hajdu — Kitty Köhler — Gabriella Kulcsár — Eszter Melis — Róbert Patay — Géza Szabó — Vajk Szeverényi — Dante Ayala — Julia Giblin: **Recent data of mobility patterns from Hungary during the 3rd and 2nd millennium BC**
- 9.40 Melis Eszter — Szeniczey Tamás — Köhler Kitty — Jakab Július — Hajdu Tamás: **Population changes in the Northwestern part of the Carpathian Basin during the Early and Middle Bronze Age**
- 10.00 Mario Novak — Dinko Tresić Pavičić: **Living and dying during the Bronze Age in the Pannonian Basin — mortuary practices and health conditions in the community of Jagodnjak between 2000 and 1500 BCE**

- 10.20 Discussion
- 10.40 Coffee break
- chairman: Daria Ložnjak Dizdar
- 11.00 Attila Horváth M.: **The role of the Danube in prehistoric Budapest**
- 11.20 Aleksandar Kapuran — Mario Gavranović — Igor Jovanović: **Urnfields before Urnfields? — New results on urn cemeteries in northeastern Serbia**
- 11.40 Peter Mali: **Beginnings of the Tumulus period in the Eastern Transdanubia**
- 12.00 Divna Gačić — Jovan Koledin: **Bronze Age hoards from Tovarnik**
- 12.20 Discussion
- 12.40 Coffee break
- chairman: Mario Gavranović
- 13.00 János Gábor Tarbay: **What does a hoard contain? — The selection of objects in the Late Bronze Age hoard from Bonyhád**
- 13.20 Kelly Reed — Dragana Filipović — Sonja Filatova: **New insights into the diet and agriculture of Bronze Age communities in the Middle Danube**
- 13.40 Vojislav Filipović: **Connections between the Serbian Danube Region and the Balkan Hinterland during the Bronze and Iron Age: Misconceptions and Facts**
- 14.00 Miloš Spasić — Marija Ljuština — Dragana Stojić: **Jakovo — Ekonomija Sava: Cultural Trajectories from the Bronze Age to the Roman Times**
- 14.20 Discussion
- 14.40 Lunch in Museum
- IRON AGE
- chairman: Marija Ljuština
- 15.30 Carola Metzner-Nebelsick — Daria Ložnjak Dizdar — Domagoj Dujmić — Louis Nebelsick — Marko Dizdar — Frank N. Stremke: **Batina and Dalj — Two major defended settlement sites of the Late Bronze and Iron Age date at the crossroads of west and east — New research**
- 15.50 Daria Ložnjak Dizdar — Petra Rajić Šikanjić: **Multiple Early Iron Age graves in Sotin and Batina — contribution to female life stages in the prehistoric societies in the Danube region**
- 16.10 Tomislav Hršak — Marko Dizdar: **Early Iron Age female burials at the Batina — Sredno cemetery (Baranya, Croatia)**
- 16.30 Discussion
- 16.45 Coffee break
- chairman: Carola Metzner-Nebelsick
- 17.00 Domagoj Dujmić: **About the „hoard“ Daljska planina — Kraljevac**
- 17.20 Bence Soos: **Follow the Rivers? Possibilities of reconstructing the communication networks of the Late Hallstatt Age in Southern Pannonia**
- 17.40 Ivan Drnić — Marta Rakvin: **The missing link? The Late Hallstatt and Early La Tène Horizons on Dalj — Busija Cemetery (Eastern Croatia)**
- 18.00 Discussion
- 18.15 Coffee break
- chairman: Ivan Drnić
- 18.30 Károly Tankó: **The Danube and the Celts in the northern part of Transdanubia**
- 18.50 Marko Dizdar — Domagoj Dujmić: **Middle La Tène female costume and jewellery at the Osijek — Zeleno polje cemetery: Local and/or part of a bigger world?**
- 19.10 Boris Kratožil: **Marikovo — Kratine: the open type settlement of La Tène culture**
- 19.40 Discussion
- 19.50 Final discussion — Bronze and Iron Age (H. Potrebica)
- 20.10 Dinner in Museum and closing of the conference
- POSTERS
- Tihomir Percan — Asja Tonc — Josip Višnjić: **Prehistoric finds from Kolodvar near Osijek**
- F. Zsófia Sörös: **The cultural context of a zoomorphic silver bracelet from Velem, Hungary and a few remarks on its type**

Systematic archaeological research at the site of Kotlina, Baranya — preliminary report

The systematic research of the prehistoric site of Kotlina is initiated in year 2018. The site is situated on northern slopes of the BANSKO BRDO hill in the Baranya region. Modern village of Kotlina is situated on a certain distance of the Danube edge of the loess plateau, while the prehistoric settlement was situated along a large ravine. The field survey carried out in 1962 and in 2009, revealed a large number of archaeological sites in the region, ranging from all periods.

The archaeological researches in 2018 were carried out on the location of Suzai Heđ, in two separate phases. The first phase included magnetometric survey of the entire cadastral particle no. 460. Thus obtained results confirmed the existence of a double ditch on the location Heđ. This type of situations with ditches (so-called rondel) is known at numerous Late Neolithic sites in the Pannonian plain. Based on these data, one trench was positioned to the south of the rondel, covering the area of 50 m². In this paper will be presented the preliminary results of these researches, including the most representative finds, from obsidian, chipped and ground lithic tools, bone artefacts, and pottery finds.

Dragana Rajković
Archaeological museum Osijek
Osijek, Croatia
dragana.rajkovic@amo.hr

Tomislav Hršak
Archaeological museum Osijek
Osijek, Croatia
tomislav.hrsak@amo.hr

Selena Vitezović
Institute of Archaeology
Belgrade, Serbia
s.vitezovic@ai.ac.rs
selenavitezovic@gmail.com

Living on the edge: landscape and settlement structures along the Danube tributaries

Two small scale archaeological prospection projects and their results will be presented and compared, both using primary non-destructive archaeological methods.

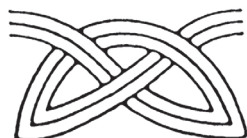
The first research area is located in the microregion around the site Těšetice (Czech Republic). It is defined by an area between rivers Únanovka and Jevišovka belonging to the Morava river basin. The goal of the prospection is to understand the settlement structure and landscape development focusing on the components from Prehistory (especially the Neolithic). Since the prospection is not centred on detecting settlements only, our ambition is to detect various economic activities around them as well as to assess how extensive was the knowledge of Man about the economic potential of his surrounding.

The second research area is located in Northern Hungary, geographically and geopolitically in a border region, in the Ipoly Basin which separates the Slovak Ore Mountains from the northern foothills of the North Hungarian Mountains. The Ipoly Szécsény Archaeological Project collects data and analyses settlement patterns for the Neolithic (and Prehistoric) period of a smaller geographic area (Szécsény basin, which is located in the middle course of the Ipoly river) using interdisciplinary and non-destructive archaeological methods. At the local level, we examine the identifiable connections between smaller communities (settlements), the geo-geomorphological environment of the sites and their regularities. At the regional level, we try to determine – mainly based on import findings – the quality and direction of long-distance connections in different prehistoric times.

Our presentation is about analysing the possible roles of the main river courses from the Neolithic period to the Iron Age. Also, we try to outline some of the possible routes for the transportation of archaeological finds (e.g. raw materials for stone tool production) and of people carrying these finds (or of migrating communities).

Szilvia Fábián
Szilvia Guba
Nicklas Larsson
B. Roderick Salisbury
Péter Tóth
Szabolcs Czifra

AMO ARCHAEOLOGICAL
MUSEUM OSIJEK



THE INSTITUTE OF ARCHAEOLOGY



Ministry
of Science
and Education



Republika
Hrvatska
Ministarstvo
kulture
*Republic
of Croatia
Ministry
of Culture*

