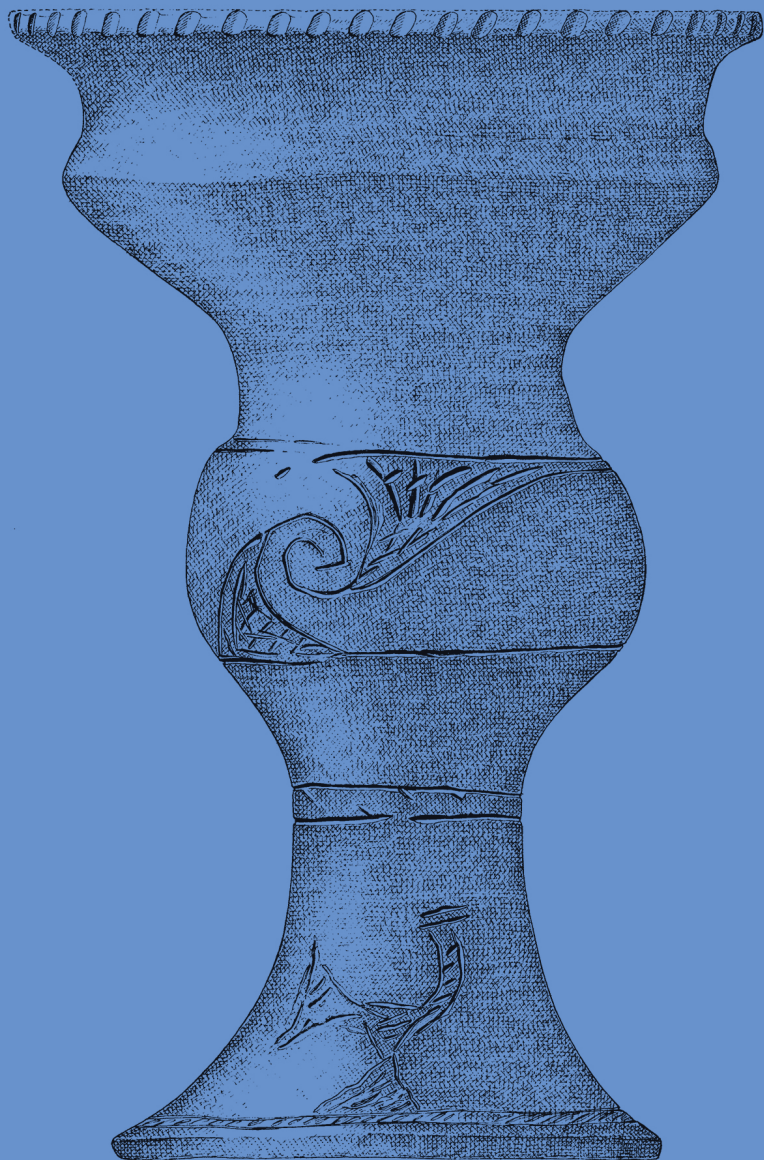




**Prehistoric  
Communities  
along the  
Danube**



Different parts of historic Middle Danube region represented a culturally and historically integral unit for several millennia. In contrast, modern borders divide them into different worlds by cutting traditional ties. Even archaeology has not remained untouched by these tendencies.

In the last decades, large-scale rescue excavations accompanied by new technologies applied during fieldworks and assessments, provided new opportunities for both the Hungarian, Croatian and Serbian archaeological research. The international event aims to offer a platform to discuss separately achieved results within the frames of a round-table conference. It focuses on interpreting the archaeological record and the exchange of experiences of various scientific methods. The final purpose is to create a regional synthesis on a cross-border level.

Venue:

**Archaeological Museum Osijek, Croatia  
November, 28—30 November 2019**

ORGANIZERS:

TOMISLAV HRŠAK — ARCHAEOLOGICAL MUSEUM OSIJEK  
MARKO DIZDAR — INSTITUTE OF ARCHAEOLOGY ZAGREB

SCIENTIFIC BOARD:

MARKO DIZDAR — INSTITUTE OF ARCHAEOLOGY ZAGREB  
TOMISLAV HRAŠK — ARCHAEOLOGICAL MUSEUM OSIJEK  
TIHOMILA TEŽAK-GREGL — DEPARTMENT OF ARCHAEOLOGY, FACULTY  
OF HUMANITIES AND SOCIAL SCIENCES UNIVERSITY OF ZAGREB  
JACQUELINE BALEN — ARCHAEOLOGICAL MUSEUM ZAGREB  
VIKTÓRIA KISS — INSTITUTE OF ARCHAEOLOGY, RESEARCH CENTRE  
FOR THE HUMANITIES HUNGARIAN ACADEMY OF SCIENCES BUDAPEST  
ALEKSANDAR KAPURAN — INSTITUTE OF ARCHAEOLOGY BELGRADE  
DARIA LOŽNJAK DIZDAR — INSTITUTE OF ARCHAEOLOGY  
CAROLA METZNER-NEBELSICK — LUDWIG-MAXIMILIAN UNIVERSITY  
MÜNCHEN  
HRVOJE POTREBICA — DEPARTMENT OF ARCHAEOLOGY, FACULTY  
OF HUMANITIES AND SOCIAL SCIENCES UNIVERSITY OF ZAGREB

GRAPHIC DESIGN:

NINA BAČUN & ROBERTA BRATOVIĆ (OAZA)

PRINTED BY:

ISPIS D.O.O.

PUBLISHER:

INSTITUTE OF ARCHAEOLOGY & ARCHAEOLOGICAL MUSEUM OSIJEK

FINANCIAL SUPPORT:

MINISTRY OF SCIENCE AND EDUCATION OF THE REPUBLIC OF CROATIA  
HR — 10000 ZAGREB, DONJE SVETICE 38  
MINISTRY OF CULTURE OF THE REPUBLIC OF CROATIA  
HR — 10000 ZAGREB, RUNJANINOVA 2

ZAGREB — OSIJEK 2019

OSIJEK, 28<sup>th</sup> — 30<sup>th</sup> November, 2019

# CONFERENCE PROGRAM

## 28<sup>th</sup> November 2019

9.00 Arrival and registration

10.00 Opening the conference (T. Hršak and M. Dizdar)

### KEYNOTE LECTURE

10.10 Mitja Guštin, **Up the river Danube to the core of Europe and vice versa**

10.40 Coffee break

### NEOLITHIC

chairman: Rajna Šošić Klindžić

11.00 Jelena Jovanović — Jelena Marković — Camille de Becdelievre — Alejandro Romero — Sofija Stefanović: **Diet-related strategies of Early Neolithic communities along the Danube and its vicinity: from the Danube Gorges through southern part of Great Pannonian Plain**

11.20 Krisztián Oross: **Absolute chronology of 6<sup>th</sup> millennium calBC western Hungary: achievements and opportunities**

11.40 Kristina Penezić: **Danube Neolithic landscapes**

12.00 Dragana Antonović — Dragana Rajković: **Starčevo culture luxury: cult objects and personal ornaments made of stone**

12.20 Discussion

12.40 Coffee break

chairman: Krisztián Oross

13.00 Lidija Balj: **Archaeological traces of the childhood in the Vinča culture from Gomolava site**

13.20 Marcel Burić — Roman Scholz: **Noli tangere circulos eorum: non-destructive magnetometric and geological investigations on the Bapska tell settlement**

- 13.40 Katarina Botić: **Neighbours with benefits? Vinča's presence along the Danube's right bank in eastern Slavonia and its coexistence with the other Neolithic populations**
- 14.00 János Jakucs: **Vinča, Ražište, Malo Koreno, Sopot: Comments on Chronology and Cultural Dynamics from a Southeast Transdanubian Perspective**
- 14.20 Discussion
- 14.40 Lunch in Museum  
chairman: Katarina Botić
- 15.30 Maja Krznarić Škrivanko — Boris Kratofil: **Vinkovci — Zablacé: Newly discovered site of the Sopot culture in Vinkovci Region**
- 15.50 Boban Tripković — Rajna Šošić Klindžić — Hrvoje Kalafatić — Bartul Šiljeg — Tomislav Hršak — Ina Miloglav — Jasna Vuković: **Circles in the rye, mounds in the wood: an archaeological story of the enclosed sites in the Northern Balkans**
- 16.10 Tibor Marton — Anett Osztás — János Gábor Ódor — Krisztián Oross: **On the fringes of the Balkan Neolithic: spread of the Sopot culture along the Danube**
- 16.30 Goran Tomac: **Animal husbandry at the Sopot site Gorjani — Kremenjača (Slavonia, Croatia)**
- 16.50 Discussion
- 17.10 Coffee break  
chairman: Jacqueline Balen
- 17.30 Evelin Pap: **New observations on the neolithic along the left bank of the Danube: Sopot culture burial ground at Dávod**
- 17.50 Dragana Rajković — Tomislav Hršak — Selena Vitezović: **Systematic archaeological research at the site of Kotlina, Baranya — preliminary report**
- 18.10 Szilvia Fábíán — Szilvia Guba — Nicklas Larsson — B. Roderick Salisbury — Péter Tóth — Szabolcs Czifra: **Living on the edge: landscape and settlement structures along the Danube tributaries**

18.30 Discussion

- 18.45 Coffee break  
COPPER AGE  
chairman: Gabriella Kulcsár

- 19.00 Anđelka Putica: **Contribution to the study of the widespread of the Retz-Gajary culture**
- 19.20 Jacqueline Balen — Ina Miloglav: **Transition and coexistence of the cultures at the end of the Copper Age in Eastern Croatia**
- 19.40 Siniša Radović — Hrvoje Kalafatić: **Cattle-breeding in Slavonia during Copper Age: case study of Čeminac — Vakanjac**
- 20.00 Selena Vitezović — Vedrana Krištofić: **Bone industry in the Vučedol culture: some preliminary results**
- 20.20 Discussion
- 20.40 Final discussion — Neolithic and Copper Age (T. Težak-Gregl)
- 21.00 Dinner in Museum

## 29<sup>th</sup> November 2019

- BRONZE AGE  
chairman: Hrvoje Kalafatić
- 9.00 Gabriella Kulcsár: **Bronze Age Settlement and Society along the Danube in Central Hungary**
- 9.20 Viktória Kiss — Andás Czene — Marietta Csányi — János Dani — Anna Endrődi — Szilvia Fábíán — Tamás Hajdu — Kitty Köhler — Gabriella Kulcsár — Eszter Melis — Róbert Patay — Géza Szabó — Vajk Szeverényi — Dante Ayala — Julia Giblin: **Recent data of mobility patterns from Hungary during the 3<sup>rd</sup> and 2<sup>nd</sup> millennium BC**
- 9.40 Melis Eszter — Szeniczey Tamás — Köhler Kitty — Jakab Július — Hajdu Tamás: **Population changes in the Northwestern part of the Carpathian Basin during the Early and Middle Bronze Age**
- 10.00 Mario Novak — Dinko Tresić Pavičić: **Living and dying during the Bronze Age in the Pannonian Basin — mortuary practices and health conditions in the community of Jagodnjak between 2000 and 1500 BCE**

- 10.20 Discussion
- 10.40 Coffee break
- chairman: Daria Ložnjak Dizdar
- 11.00 Attila Horváth M.: **The role of the Danube in prehistoric Budapest**
- 11.20 Aleksandar Kapuran — Mario Gavranović — Igor Jovanović: **Urnfields before Urnfields? — New results on urn cemeteries in northeastern Serbia**
- 11.40 Peter Mali: **Beginnings of the Tumulus period in the Eastern Transdanubia**
- 12.00 Divna Gačić — Jovan Koledin: **Bronze Age hoards from Tovarnik**
- 12.20 Discussion
- 12.40 Coffee break
- chairman: Mario Gavranović
- 13.00 János Gábor Tarbay: **What does a hoard contain? — The selection of objects in the Late Bronze Age hoard from Bonyhád**
- 13.20 Kelly Reed — Dragana Filipović — Sonja Filatova: **New insights into the diet and agriculture of Bronze Age communities in the Middle Danube**
- 13.40 Vojislav Filipović: **Connections between the Serbian Danube Region and the Balkan Hinterland during the Bronze and Iron Age: Misconceptions and Facts**
- 14.00 Miloš Spasić — Marija Ljuština — Dragana Stojić: **Jakovo — Ekonomija Sava: Cultural Trajectories from the Bronze Age to the Roman Times**
- 14.20 Discussion
- 14.40 Lunch in Museum
- IRON AGE
- chairman: Marija Ljuština
- 15.30 Carola Metzner-Nebelsick — Daria Ložnjak Dizdar — Domagoj Dujmić — Louis Nebelsick — Marko Dizdar — Frank N. Stremke: **Batina and Dalj — Two major defended settlement sites of the Late Bronze and Iron Age date at the crossroads of west and east — New research**
- 15.50 Daria Ložnjak Dizdar — Petra Rajić Šikanjić: **Multiple Early Iron Age graves in Sotin and Batina — contribution to female life stages in the prehistoric societies in the Danube region**
- 16.10 Tomislav Hršak — Marko Dizdar: **Early Iron Age female burials at the Batina — Sredno cemetery (Baranya, Croatia)**
- 16.30 Discussion
- 16.45 Coffee break
- chairman: Carola Metzner-Nebelsick
- 17.00 Domagoj Dujmić: **About the „hoard“ Daljska planina — Kraljevac**
- 17.20 Bence Soos: **Follow the Rivers? Possibilities of reconstructing the communication networks of the Late Hallstatt Age in Southern Pannonia**
- 17.40 Ivan Drnić — Marta Rakvin: **The missing link? The Late Hallstatt and Early La Tène Horizons on Dalj — Busija Cemetery (Eastern Croatia)**
- 18.00 Discussion
- 18.15 Coffee break
- chairman: Ivan Drnić
- 18.30 Károly Tankó: **The Danube and the Celts in the northern part of Transdanubia**
- 18.50 Marko Dizdar — Domagoj Dujmić: **Middle La Tène female costume and jewellery at the Osijek — Zeleno polje cemetery: Local and/or part of a bigger world?**
- 19.10 Boris Kratožil: **Marikovo — Kratine: the open type settlement of La Tène culture**
- 19.40 Discussion
- 19.50 Final discussion — Bronze and Iron Age (H. Potrebica)
- 20.10 Dinner in Museum and closing of the conference
- POSTERS
- Tihomir Percan — Asja Tonc — Josip Višnjić: **Prehistoric finds from Kolodvar near Osijek**
- F. Zsófia Sörös: **The cultural context of a zoomorphic silver bracelet from Velem, Hungary and a few remarks on its type**

## Cattle-breeding in Slavonia during Copper Age: case study of Čeminac — Vakanjac

Cattle-breeding dominates in subsistence economies of Neolithic and Copper Age communities in central Europe. Although the current faunal data are limited they indicate some intensification of husbandry during the Copper Age, most likely linked with social and economic transformations. Different settlement patterns as may be the case with the people using Retz-Gajary ceramic style, could reflect, as some scholars hypothesized, a more mobile lifestyle of this population.

The recently excavated Copper Age site of Čeminac – Vakanjac (Baranya, Croatia) revealed a very large settlement with well-defined Retz-Gajary ceramic style. It is situated on a slightly elevated part of terrain and consists of several large pits, possibly used as houses. These are surrounded by smaller pits, often grouped, most likely used for other purposes. Faunal assemblage contains numerous remains of domestic mammals, dominated by cattle.

Here we integrate results of the archaeozoological study with ceramic and radiocarbon data in order to address the nature of this settlement. We discuss the role of cattle and its significance in the subsistence economy of the Copper Age people associated with the Retz-Gajary ceramic style, during the mid-4<sup>th</sup> millennium.

Siniša Radović  
Croatian Academy of Science and Arts  
Institute for Quaternary Palaeontology and Geology  
Zagreb, Croatia  
[sinisa.radovic@gmail.com](mailto:sinisa.radovic@gmail.com)

Hrvoje Kalafatić  
Institute of Archaeology  
Zagreb, Croatia  
[hrvoje.kalafatic@iarh.hr](mailto:hrvoje.kalafatic@iarh.hr)

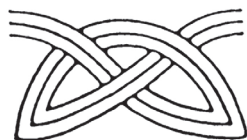
## Bone industry in the Vučedol culture: some preliminary results

Vučedol culture is known for a long time in archaeological literature; several large tell settlements in the southern Carpathian basin were excavated since the late 19th century and in the early 20th century. Very rich and diverse archaeological finds were recovered at sites such as eponymous Vučedol, Sarvaš-Gradac, Zók near Pécs, etc. However, these early research campaigns collected material selectively, therefore, some of the aspects of the portable finds were not carefully analysed. Bone industry is one of these neglected aspects of the Vučedol material culture. In this paper will be presented results obtained by analyses of the bone material from excavations in the late 19th-early 20th century from the sites of Vučedol and Zók, stored today in the museum collections in the Archaeological museum in Zagreb and National museum in Belgrade, respectively. In these assemblages is present sample bias – it is clear that the material was collected selectively, and included larger segments, complete artefacts, etc., while fragmented items of smaller dimensions are missing. We attempted to recover as much as possible information from these assemblages regarding the use of raw materials, types present in the Vučedol culture, and technological traits. Both assemblages are characterized by rich antler industry, including several types of heavy-duty percussion and cutting tools, and large quantities of raw materials and semi-finished items. Furthermore, traces of working with metal tools were noted, suggesting intensive, possibly even specialized production of antler artefacts.

Selena Vitezović  
Institute of Archaeology  
Belgrade, Serbia  
[s.vitezovic@ai.ac.rs](mailto:s.vitezovic@ai.ac.rs)  
[selenavitezovic@gmail.com](mailto:selenavitezovic@gmail.com)

Vedrana Krištofić  
Institute for Archaeological Sciences  
University of Tübingen  
Tübingen, Germany  
[vedrana.kristofic@gmail.com](mailto:vedrana.kristofic@gmail.com)

AMO ARCHAEOLOGICAL  
MUSEUM OSIJEK



THE INSTITUTE OF ARCHAEOLOGY



Ministry  
of Science  
and Education



Republika  
Hrvatska  
Ministarstvo  
kulture  
*Republic  
of Croatia  
Ministry  
of Culture*

